
New drilling program to grow Manna Lithium discovery, Kalgoorlie

Mineralisation has already been outlined over 750m x 130m and remains open in every direction; Assays grade up to 1.8% Li₂O

Breaker Resources (ASX: BRB, **Breaker**) is pleased to announce that it will start a drilling program at its highly promising Manna lithium discovery near Kalgoorlie in three weeks.

The 2,000m reverse circulation (**RC**) program aims to expand the limits of the known spodumene mineralisation at Manna, which sits 15km south of Breaker's 1.4Moz Lake Roe Resource[#], 100km east of Kalgoorlie.

Breaker discovered the outcropping lithium-bearing pegmatite at Manna while doing reconnaissance gold exploration in 2018. Subsequent mapping confirmed the presence of multiple spodumene-rich pegmatite over a 750m x 130m area, with individual pegmatite dykes up to 18m-wide (see Photo 1 below and ASX Release dated 31 July 2018).

Of the five RC holes and four diamond holes drilled below the main outcrop, every hole returned multiple intercepts, with results of up to 17m at 1.8% Li₂O which project to mapped outcrop at surface (see Figures 1 & 2 below and ASX Release dated 13 November 2018).

The growth potential extends over a 5km x 1.5km area based on reconnaissance RC drilling extending south of the outcrop (Figure 1; BMRC0004-0008), and a 920-sample auger geochemical programme conducted in 2019 to test the strike potential (ASX Release dated 30 April 2019).

In the main area of outcrop, the stacked nature of the pegmatites dykes over a wide zone with little weathering is favourable for open pit mining (Figure 2). Preliminary metallurgical testwork indicates potential to produce a high grade, low impurity spodumene concentrate using heavy liquid separation (ASX Release dated 31 October 2019).

Breaker Chairman, Tom Sanders, said, "Breaker has already established that Manna is a significant discovery, with mineralisation outlined over a large area and assays demonstrating high grades by the standards of most well-known Australian lithium deposits.

"Given the favourable conditions in the lithium market and based on what we already know about the size of the Manna discovery, we believe there is potential to create significant value for Breaker shareholders.

"The mineralisation is open in every direction and we aim to grow these dimensions with the imminent drilling program.

"The results to date indicate scope to significantly increase the area of lithium mineralisation with limited further drilling," Mr Sanders said.

"Based on recent geological mapping, geochemistry and structural studies, we have identified several areas with the potential to host significant additional spodumene mineralisation.

"The drilling will test these areas and will aim to confirm the geometry of known mineralisation in other areas, ahead of resource drilling.

"At the same time, our core focus remains on gold at Lake Roe, where a Resource update is planned for late in the coming quarter or early in the March 2022 quarter."

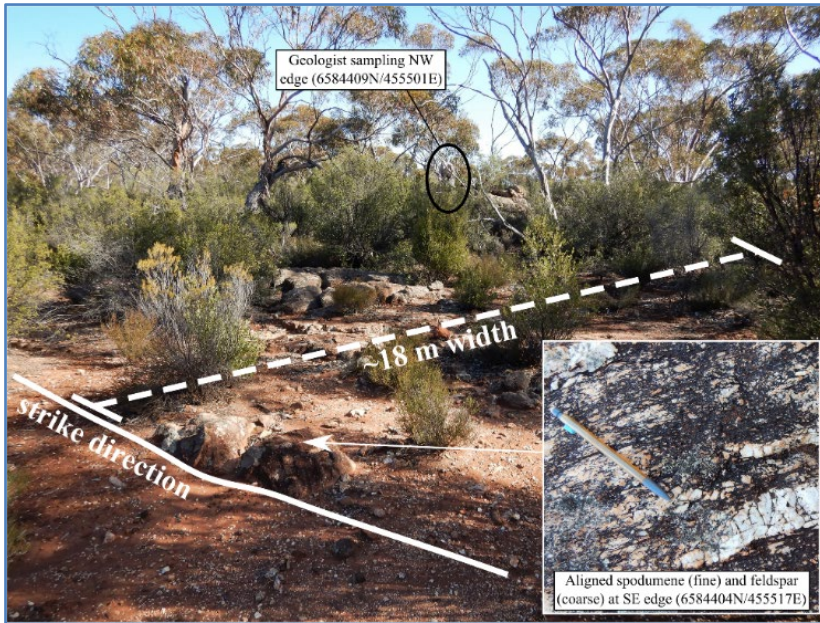


Photo 1: Manna Lithium Prospect: 18m-wide spodumene pegmatite

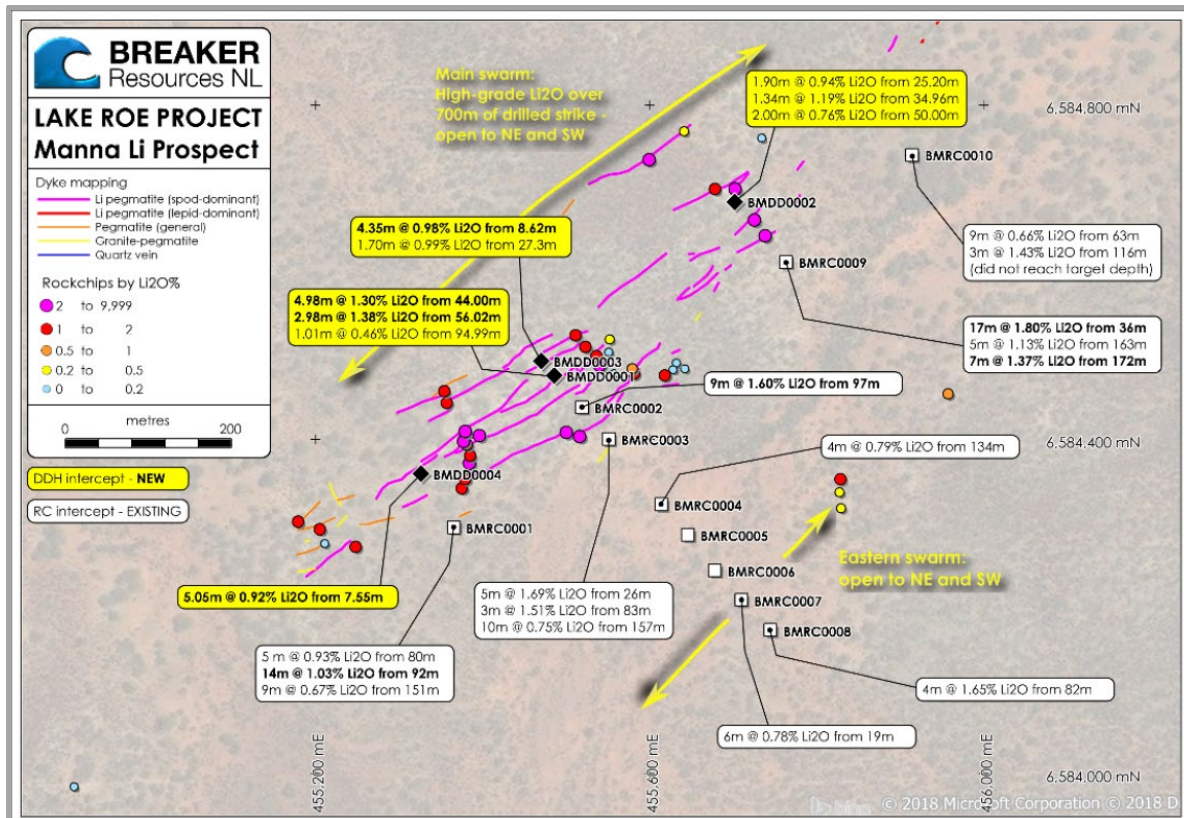


Figure 1: Manna Lithium Prospect Drill Hole Location Plan

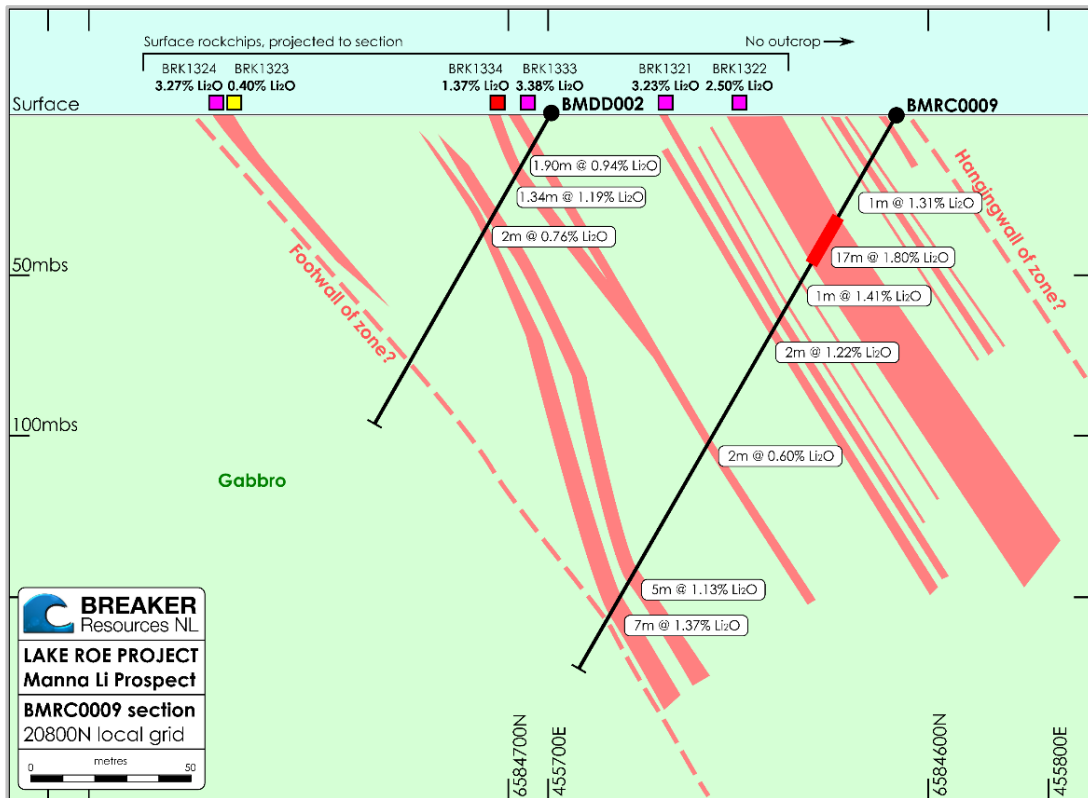


Figure 2: Cross-section through BMRC0009 and BMDD002 showing pegmatite interpretation, Significant intercepts, and surface rock chip information.

Authorised by the Board of Directors



Tom Sanders

Executive Chairman, Breaker Resources NL

23 August 2021

For further information on Breaker Resources NL please visit the Company's website at www.breakerresources.com.au, or contact:

Investors/Shareholders

Tom Sanders

Tel: +61 8 9226 3666

Email: breaker@breakerresources.com.au

Media

Paul Armstrong/Nicholas Read

Read Corporate

Tel: +61 8 9388 1474

COMPETENT PERSONS STATEMENT

The information in this report that relates to Exploration Results is based on and fairly represents information and supporting documentation compiled by Tom Sanders, a Competent Person and Member of the Australasian Institute of Mining and Metallurgy. Mr Sanders is an executive of Breaker Resources NL and is engaged by Breaker on an 80% of full time basis; he is also a shareholder in the Company. Mr Sanders has sufficient experience that is relevant to the style of mineralisation and type of deposit under consideration and to the activity being undertaken to qualify as a Competent Person as defined in the 2012 Edition of the 'Australasian Code for Reporting of Exploration Results, Mineral Resources and Ore Reserves'. Mr Sanders

consents to the inclusion in the report of the matters based on his information in the form and context in which it appears.

The information in this report that relates to the Lake Roe Mineral Resource is based on information announced to the ASX on 29 April 2021. Breaker confirms that it is not aware of any new information or data that materially affects the information included in the relevant market announcement, and that all material assumptions and technical parameters underpinning the estimates in the relevant market announcement continue to apply and have not materially changed.

Open Pit Resource Above 100mRL	Cut-off Grade (g/t Au)	Category	Tonnes	Grade (g/t Au)	Ounces Au	% Indicated
Bombora	0.5	Indicated	15,443,000	1.43	711,000	
		Inferred	2,286,000	1.2	92,000	
		Subtotal	17,729,000	1.4	803,000	89%
Crescent-Kopai	0.5	Inferred	2,818,000	0.9	86,000	
Claypan	0.5	Inferred	2,082,000	1.0	67,000	
		Total	22,629,000	1.3	956,000	74%
Underground Resource Below 100mRL	Cut-off Grade (g/t Au)	Category	Tonnes	Grade (g/t Au)	Ounces Au	% Indicated
Bombora	1.0	Indicated	809,000	2.58	67,000	
		Inferred	4,484,000	2.4	347,000	
		Total	5,293,000	2.4	414,000	16%
Total Bombora (Open Pit plus Underground)			23,022,000	1.6	1,217,000	64%
Lake Roe Mineral Resource		Grand Total	27,922,000	1.5	1,370,000	57%

About Breaker Resources NL/Lake Roe Gold Project

Breaker Resources NL (ASX BRB) is unlocking the potential of a major new greenfields gold district at its 100%-owned, 700km² Lake Roe Gold Project, located 100km east of Kalgoorlie, Western Australia. The project is situated between two operating gold mines on a recently identified southern extension of the 22Moz Laverton Tectonic Zone.

After discovery of the Bombora deposit in 2015, drilling identified a typical Archean, multi-lode gold deposit hosted by dolerite with some of the best drill hits in Western Australia, such as 17m @ 15.85g/t, 7m @ 61.78g/t and 32m @ 15.31g/t (ASX Release 27 July 2020).

The project has the attributes of scale, high-grade and outstanding growth potential in a 9km-long gold system that is growing in several areas.

Gold at the main Bombora deposit occurs in a 150m-wide zone, starting 5m from surface in a 3km-long single pit configuration with the flexibility to transition underground based on extensive high-grade lodes discovered below the open pit Resource since 2020.

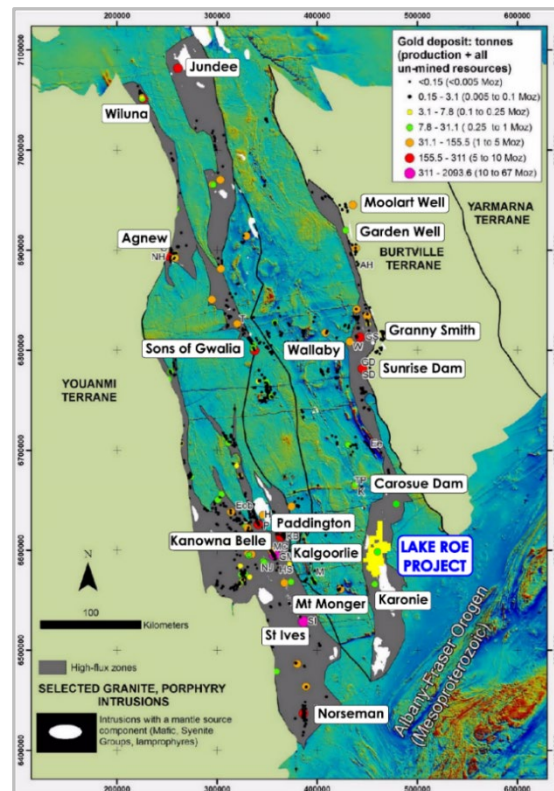


Figure 3: Lake Roe Project Location

An April 2021 Resource update resulted in a 40% increase entirely from new extensional areas, including a maiden underground Resource. Another Resource update is planned for late in the December quarter or early in the March 2022 quarter.