



BREAKER
Resources NL

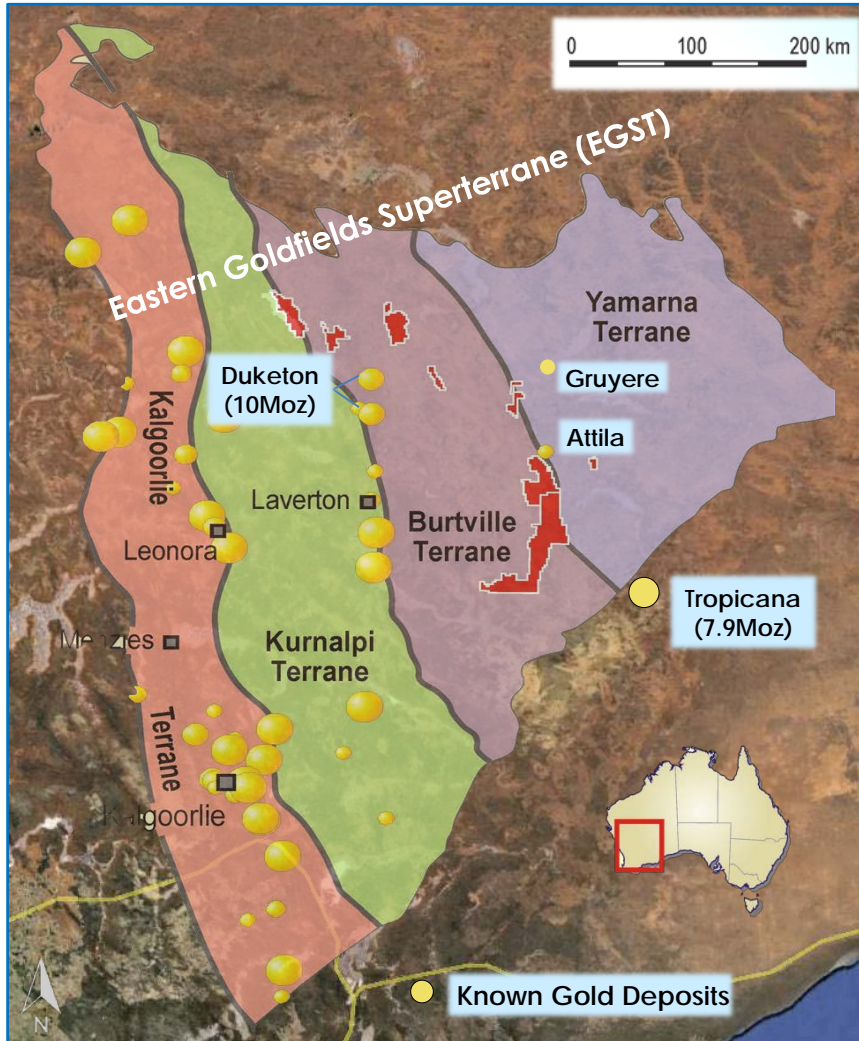
**LAYING THE FOUNDATION FOR GROWTH
BASED ON INNOVATIVE EXPLORATION**

AGM Presentation - 20 Nov 2014
Tom Sanders, Chairman

ASX Code: BRB
www.breakerresources.com.au

Background

Eastern Goldfields Superterrane (EGST)



- ✦ **Business strategy**
Using modern soil geochemistry to identify large new gold systems under cover in the unexplored eastern parts of the world class Eastern Goldfields Superterrane (EGST)
- ✦ Why?...extraordinary rewards
....next Tier 1 deposits likely to be under cover
- ✦ **The eastern half of the EGST is a new search space (new data, new tools, new discoveries)**
- ✦ Breaker moved quickly, pegging several major crustal faults one month after the Yamarna Terrane was “created” (Nov 2010)
- ✦ **Geochemistry successful**...now six large-area gold projects (3,725km²) with drill-ready targets on all projects

The Building Blocks

- ✦ In the last 12 years reliable low detection multi-element analytical tools have improved, opening up many areas where the cover is <50m
- ✦ Surface geochemistry remains the prime discovery tool ...where it works, it provides a direct link to mineralisation and lowers exploration risk (eg. Tropicana, Garden Well, Gruyere)

The Drivers of Success/Risk Management

Conversion/Growth Strategy

- ✦ Experienced management/Board Team
- ✦ Six projects, all with large new, drill-ready targets...rare in proven, high-endowment gold province
- ✦ Joint venture/s to leverage off this asset and accelerate drilling
- ✦ Targeted drilling where appropriate
- ✦ Continually assessing new opportunities using our specialised skill sets and people

Technical Foundation

- ✦ Early mover in a large, unexplored part of in a high-endowment area
- ✦ A bet on consistency of endowment in a high-endowment gold province
- ✦ Able to scan large areas cheaply on a wide sample spacing
- ✦ Structural targeting of domes/jogs close to major (deep) crustal faults



L-R: Michelle Simson, Mark Edwards, Tom Sanders, Mike Kitney

*Experienced
mining industry
professionals
focused on
shareholder
value*



Alastair Barker



Mike Outhwaite

- ✦ **Executive Chairman: Tom Sanders**
Geologist with over 35 years' experience in exploration, mining and corporate management
- ✦ **Non-Executive Director: Mark Edwards**
Lawyer with 30 years' experience in resources and corporate law
- ✦ **Non-Executive Director: Mike Kitney**
Process engineer with +40 years' experience nationally and overseas
- ✦ **Company Secretary: Michelle Simson**
20 years' experience in administration and corporate affairs
- ✦ **Exploration Manager: Alastair Barker**
Over 20 years' experience in exploration and mining
- ✦ **Senior Exploration Geologist: Mike Outhwaite**
Over 10 years' experience in exploration and mapping/structural geology

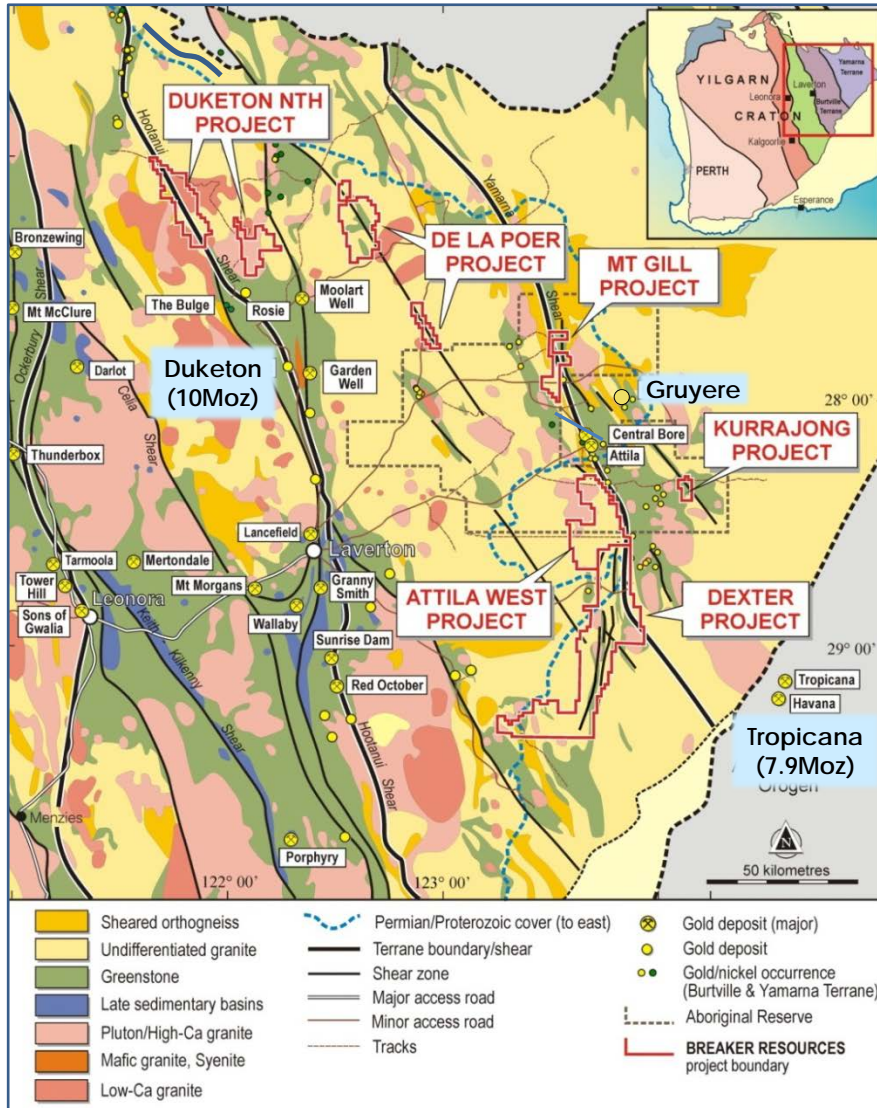
- ✦ Listed on ASX in April 2012
- ✦ Shares on issue (still tight):
 - 68,875,008 fully paid
 - 6,887,498 partly paid
- ✦ Options on issue:
 - 28,137,495 listed (expiring 31/12/14)
 - 8,400,000 unlisted
- ✦ Cash: \$1.5 million (30/09/14; \$0.9m R&D refund received 12/11/14)
- ✦ Top 20 shareholders hold ~87%
 - Directors: 24.4%
 - Strong fund support: 32.3% (Geologic, CQS, Altus, Nestor)
- ✦ 12 month range: \$0.06 - \$0.25
- ✦ Market capitalisation: ~\$5.0 million (Share price \$0.072)



RC Drilling at Dexter Gold Project

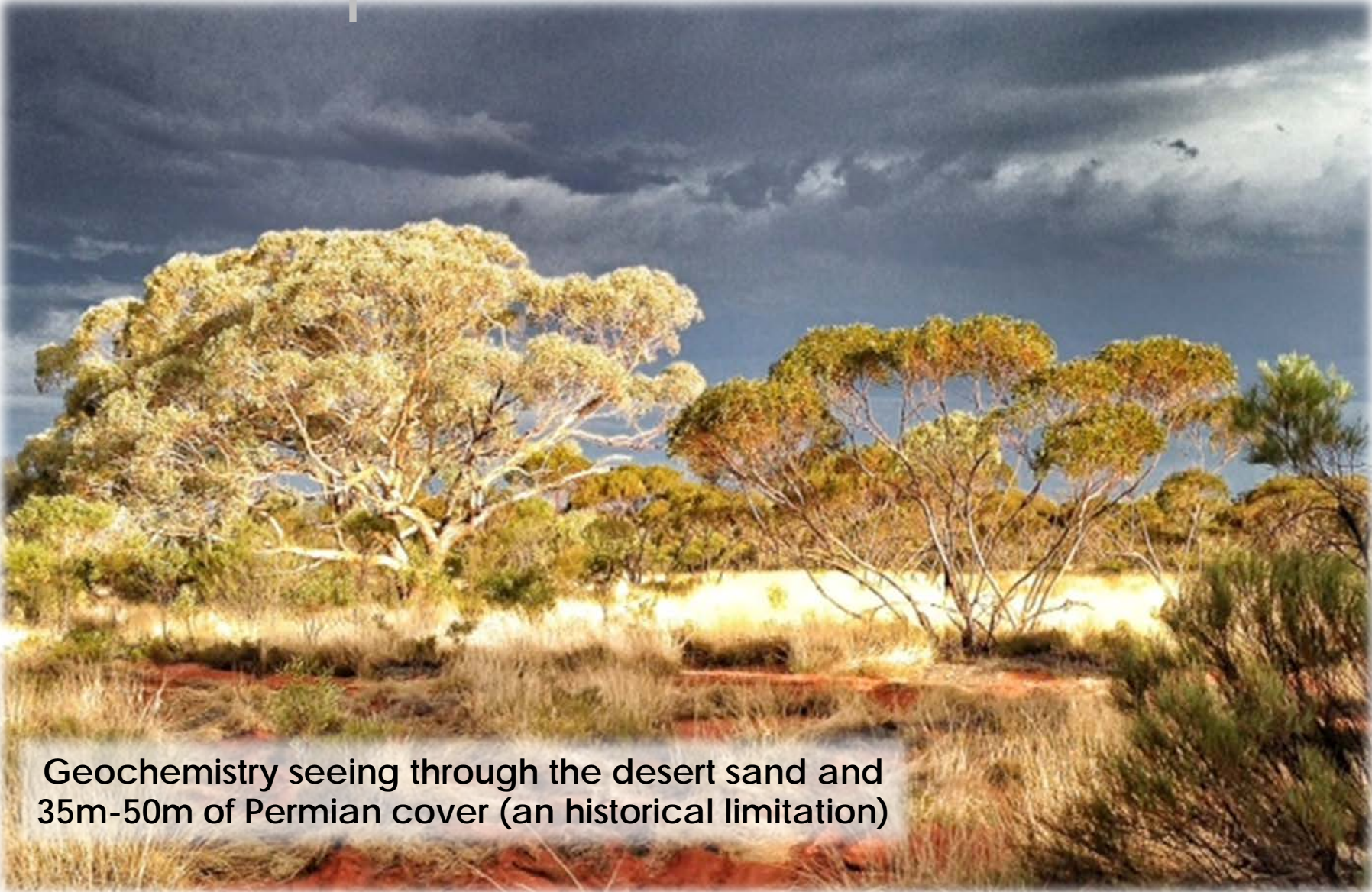
Project Overview

Eastern Goldfields Superterrane



- ✦ Six large gold projects (3,725km²) in emerging sector of EGST
 - 300km NE of Kalgoorlie
 - 100% owned
 - adjacent to major crustal faults
 - several undrilled greenstone belts
- ✦ Large new, drill-ready gold-in-soil and structural targets identified on all projects
- ✦ Recent discoveries by competitors (eg. Gruyere 3.8Moz) confirm the resource potential of the region
- ✦ Early focus on Dexter Gold Project

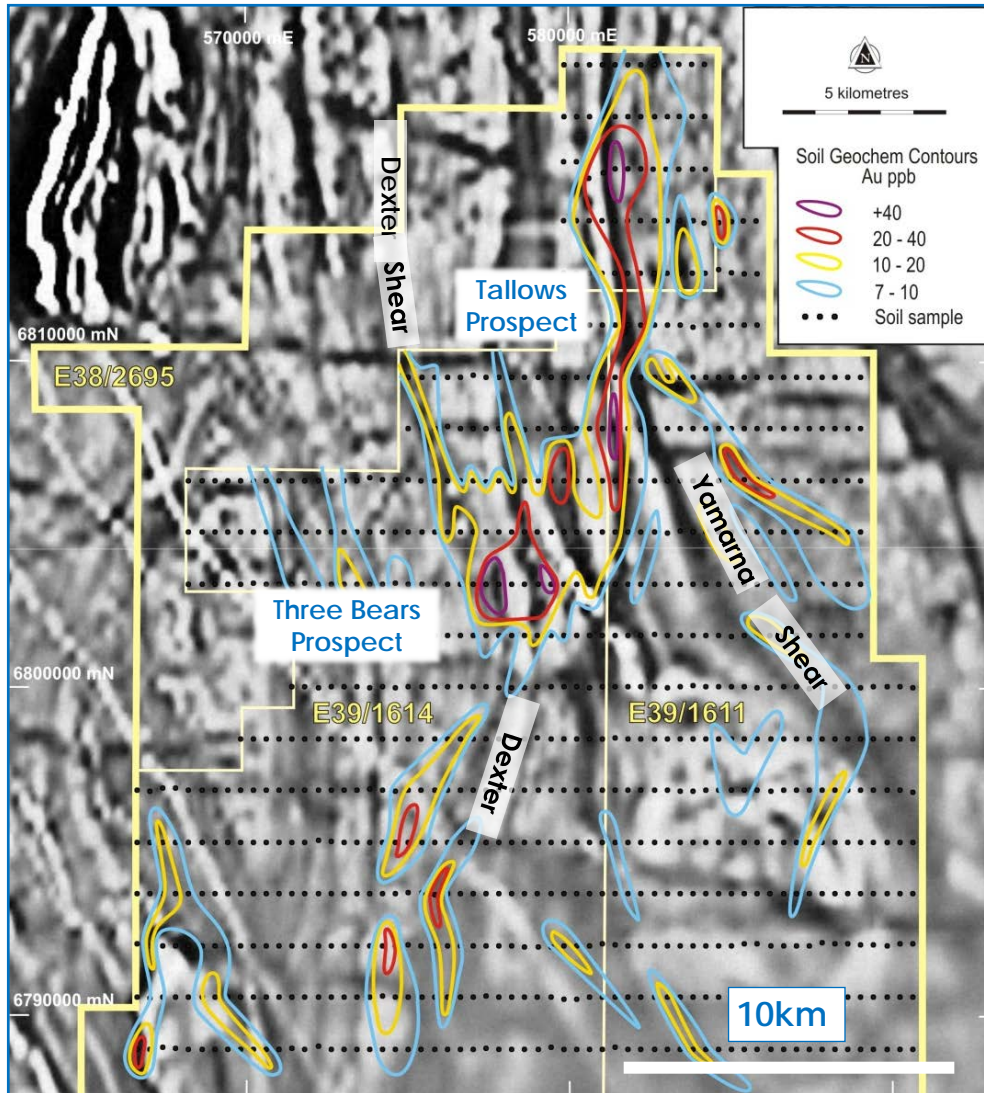
Dexter Gold Project



Geochemistry seeing through the desert sand and 35m-50m of Permian cover (an historical limitation)

Dexter Project: Three Bears/Tallows

Gold-in-soil contours over aeromagnetic image

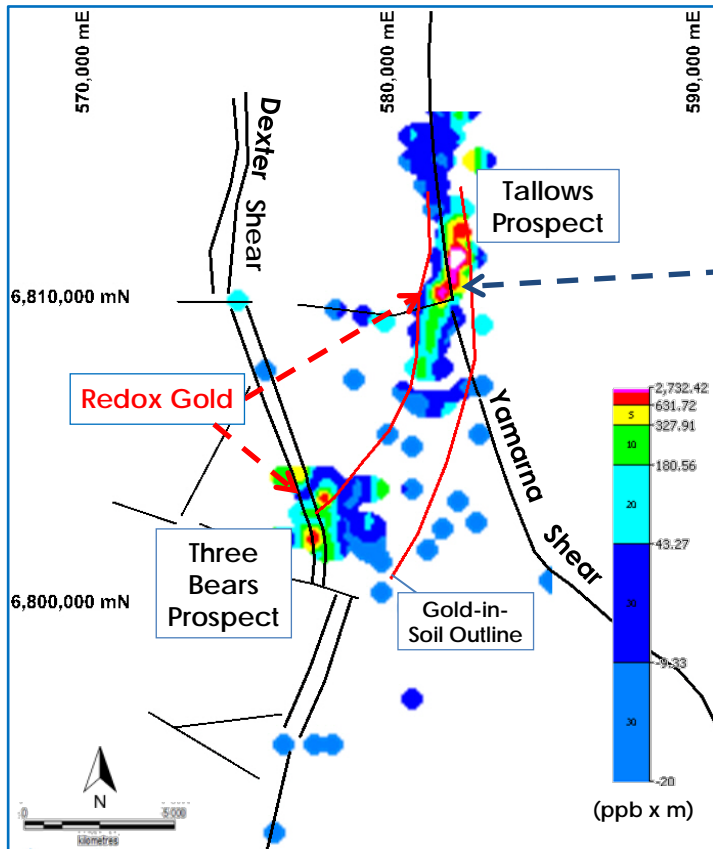


- ✦ Three Bears/Tallows anomaly - up to:
 - 298ppb gold (0.3g/t)
 - 17,415ppb silver (17.4g/t)*
- ✦ 16km long
- ✦ Spatial association with two large shear zones
- ✦ Size/magnitude of anomaly not previously documented in similar area of transported cover in WA

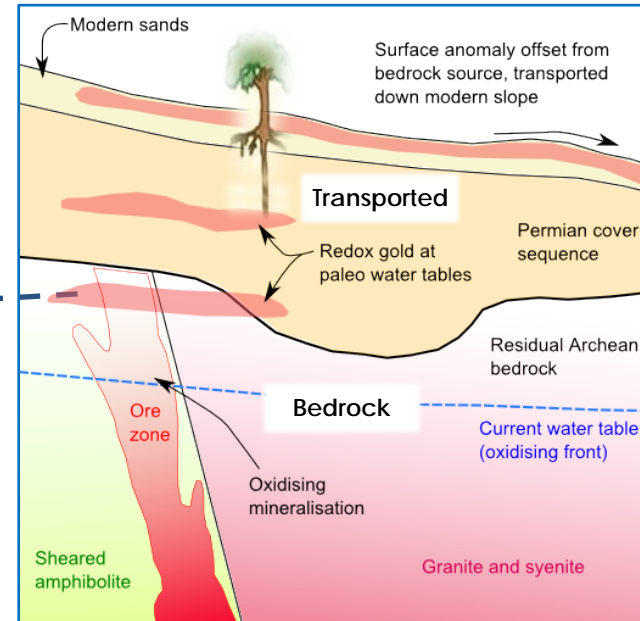
* ASX Release 13 November 2013

Three Bears/Tallows: Zeroing in

Image of redox gold in drill holes defined by 22,000m of aircore and 11,500m of RC drilling



Schematic cross-section model



Modified from CRC LEME Open File Report 246, December 2008



Bottom-of-hole syenite
(mantle connection)

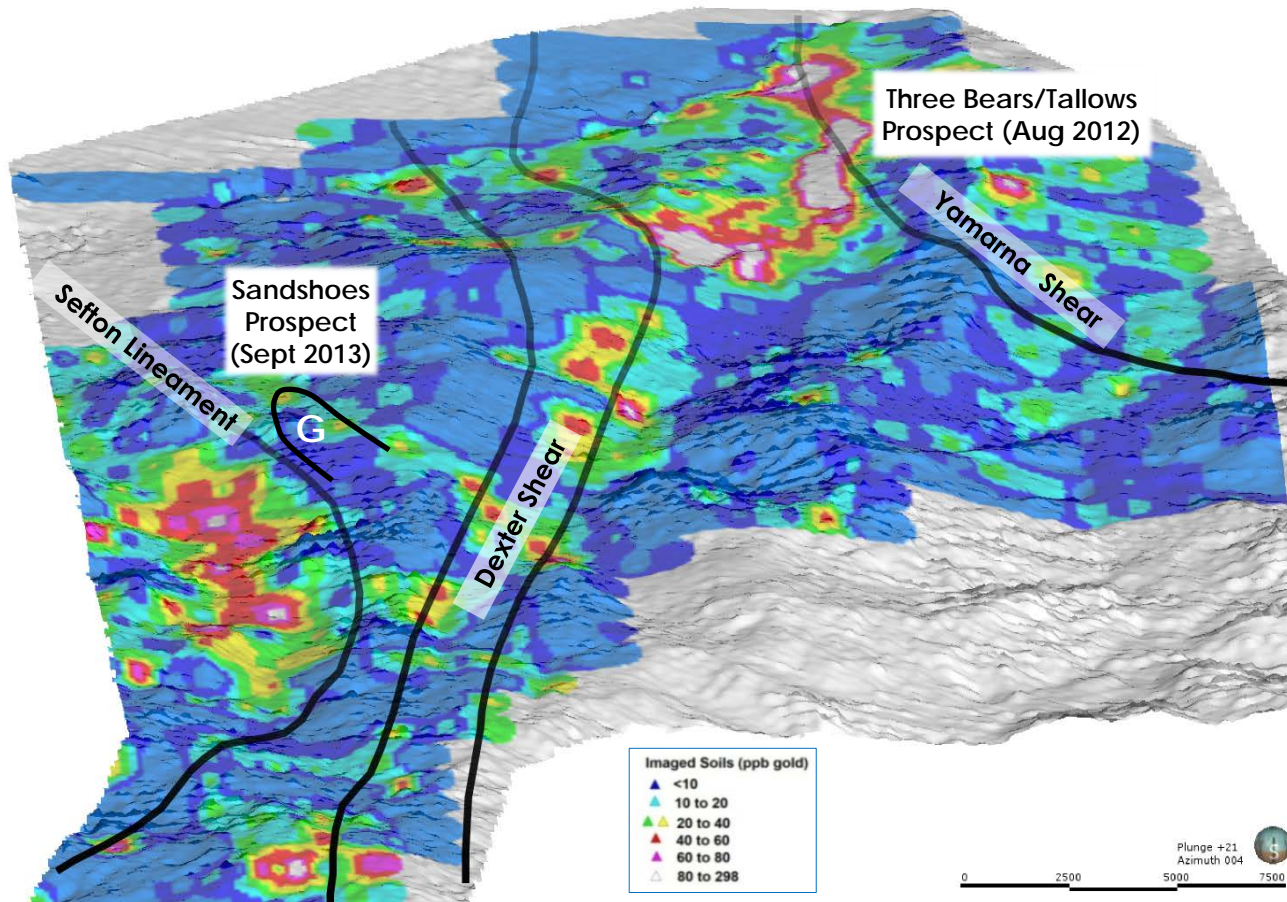


Dexter Shear Zone

- ✦ Multi-km zones of redox gold located at Three Bears & Tallows (to 3m @ 7.5g/t Au*)
- ✦ Bedrock source(s) not yet located (RC drilling planned; EIS support acknowledged)

Dexter Project: Sandshoes

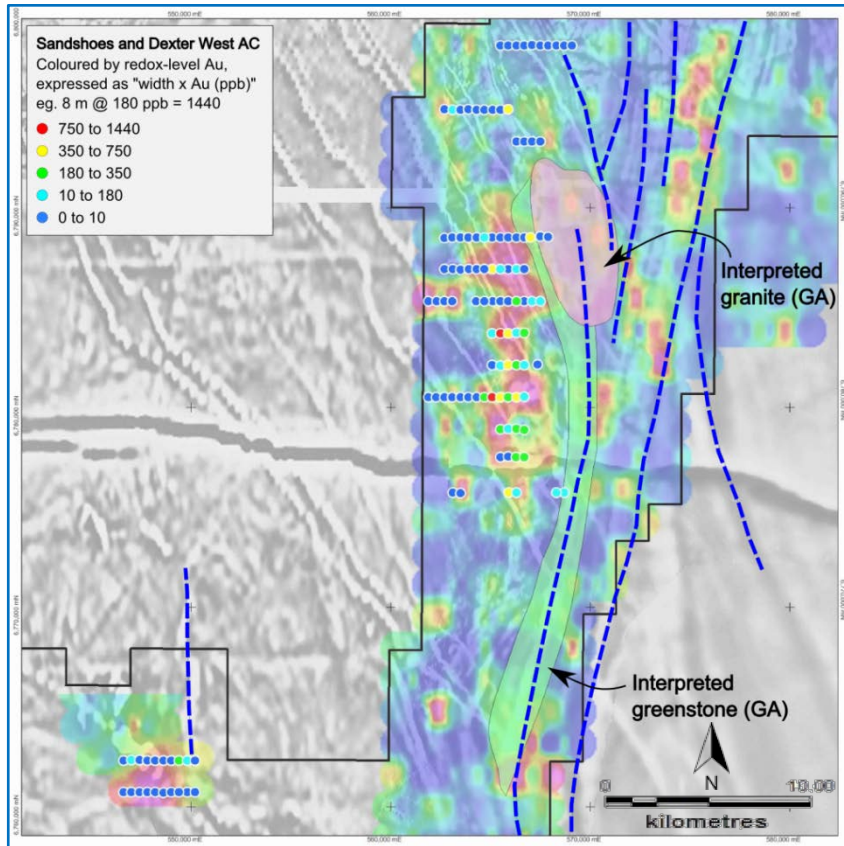
3D perspective of gold-in-soils draped over topography (x20 vertical exaggeration)



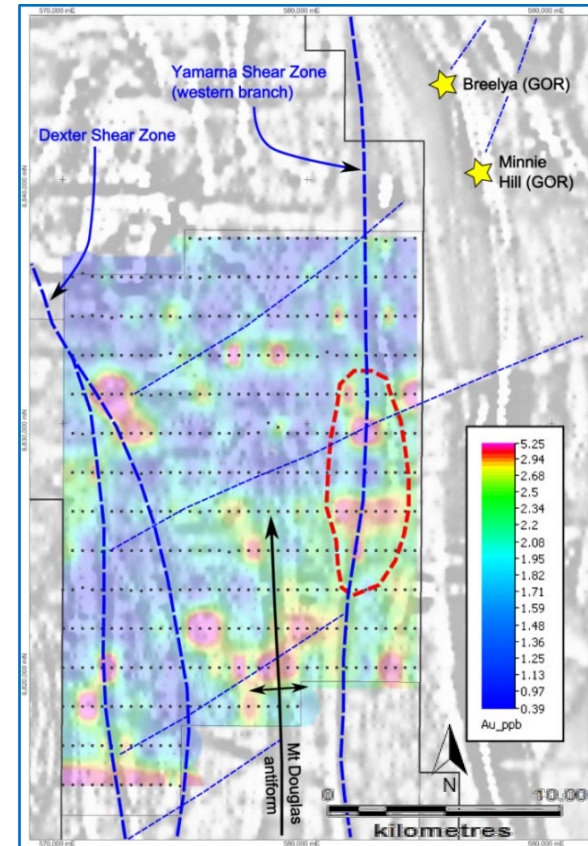
- ✦ **Second regional-scale gold-in-soil anomaly**, up to 35ppb gold*, identified Sept 2013 on intersection of Sefton Lineament, Dexter Shear (West) and a granite-greenstone contact

Dexter Project: Recent Drilling

Sandshoes and Dexter West Prospects - Imaged Gold-in-Soil over Imaged Aeromagnetics (aircore drill holes coded by redox gold)

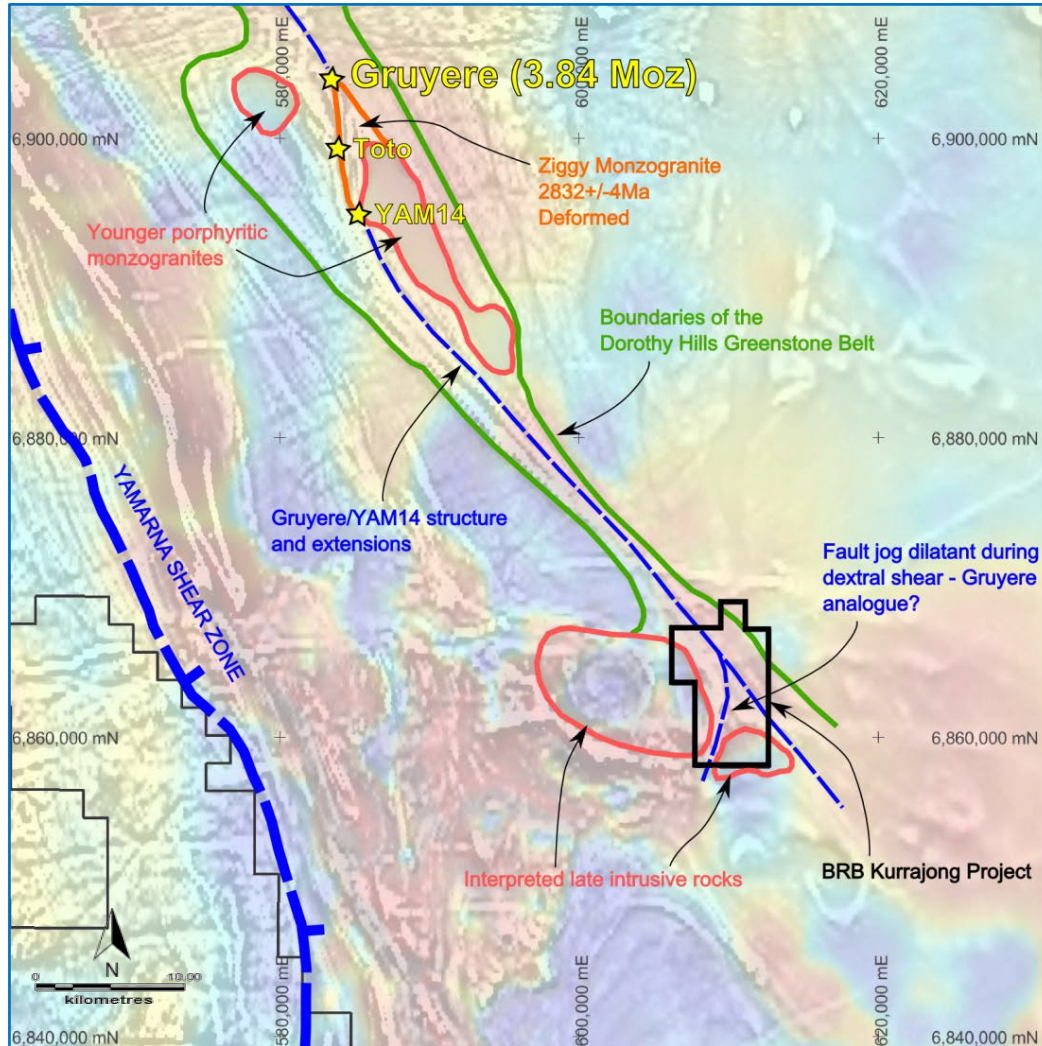


Mt Douglas Prospect - Imaged Gold-in-Soil over Imaged Aeromagnetics



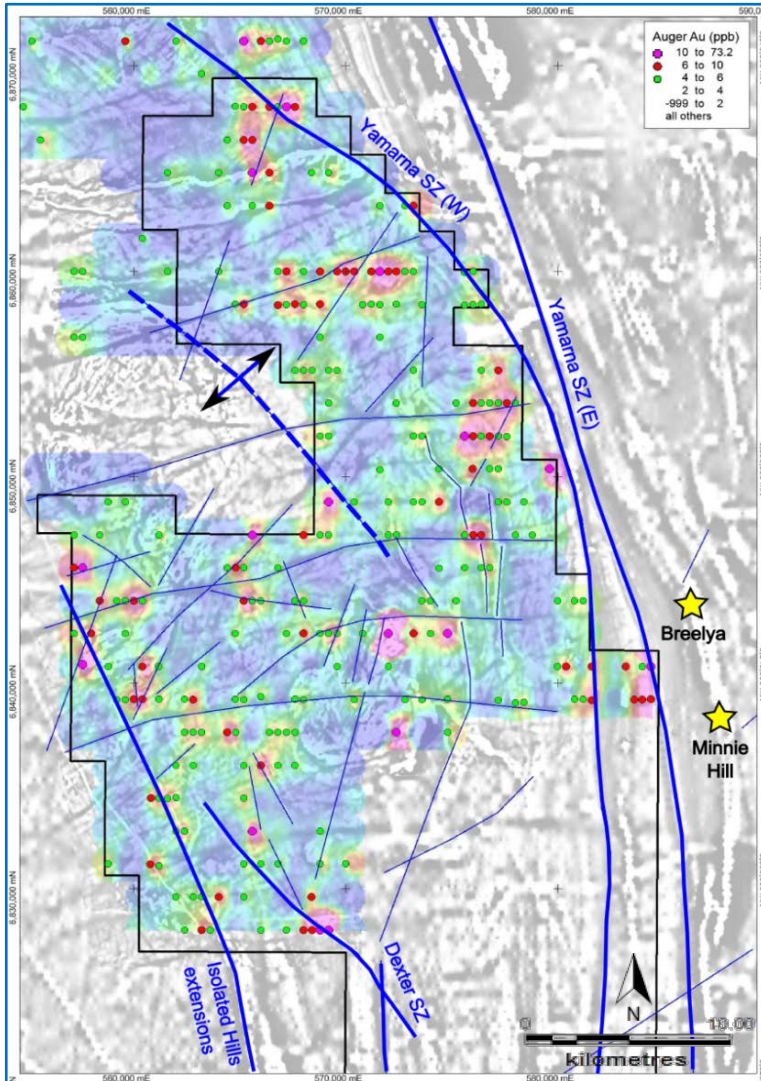
- ✦ Sandshoes Prospect – redox gold on all drill holes through anomaly...possibly leaking from granite-cored greenstone on eastern margin of anomaly (RC drilling planned)
- ✦ Mt Douglas Prospect – potentially significant soil anomaly identified on Yamarna Shear Zone

Imaged Gravity on Aeromagnetics



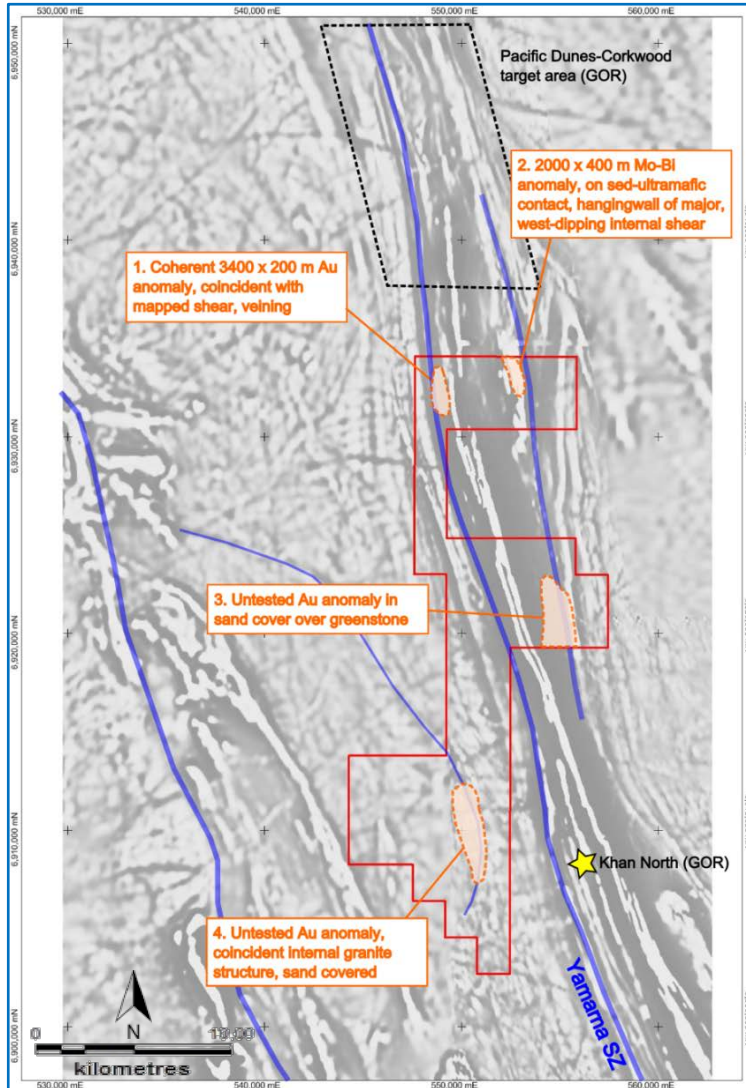
- ✦ Kurrajong Project the next interesting position south of Gruyere discovery with a similar structural setting
- ✦ A large system can be tested for with a modest RC drill campaign over a well defined structural target
- ✦ EIS grant for \$150,000 co-funded RC drilling in FY2014/15

Imaged auger gold over Aeromagnetics



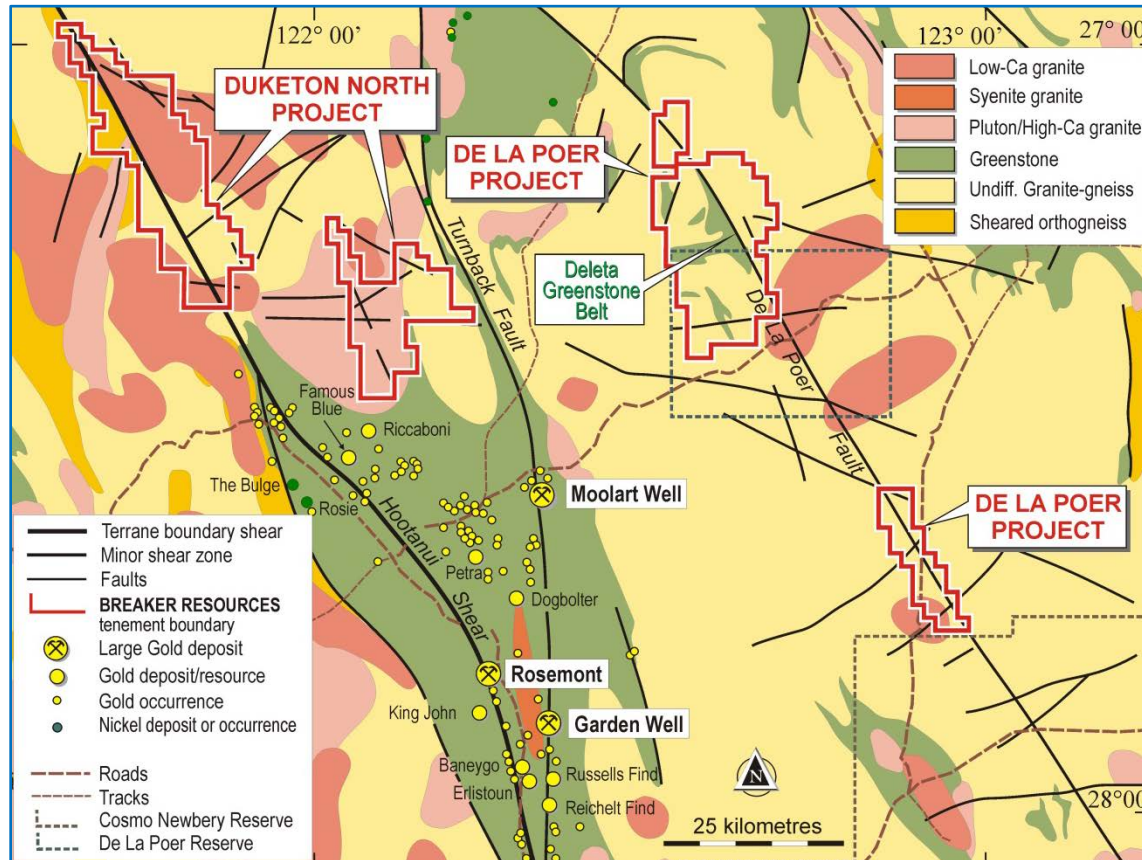
- ✦ The project contains sections of the Yamarna and Dexter shear zones, plus the extensions of the Isolated Hills Greenstone Belt
- ✦ Generally 15-30m Permian cover
- ✦ Multiple drill-ready targets on splay faults adjacent to major structures with coincident pathfinders (northeast-trending faults important)
- ✦ The only drilling of auger anomalies has occurred in the far north and the far southeast corner – where bedrock structure and anomalism was defined
- ✦ All areas are amenable to cost-effective AC drilling

Priority Targets over Aeromagnetics



- ✦ Mt Gill Project on major structures between Gold Road's main Yamarna deposits and their Pacific Dunes-Corkwood target
- ✦ Significant greenstone – 10km strike, 4-7km width
- ✦ Thin Permian cover and aeolian sand cover, especially in the south
- ✦ 1,600 x 400m auger produced anomalism in greenstones (mainly) and granite
- ✦ Mapping and 800 x 200m soil sampling over greenstone have defined drill-ready targets

Location/Interpreted Geology



Duketon North Project

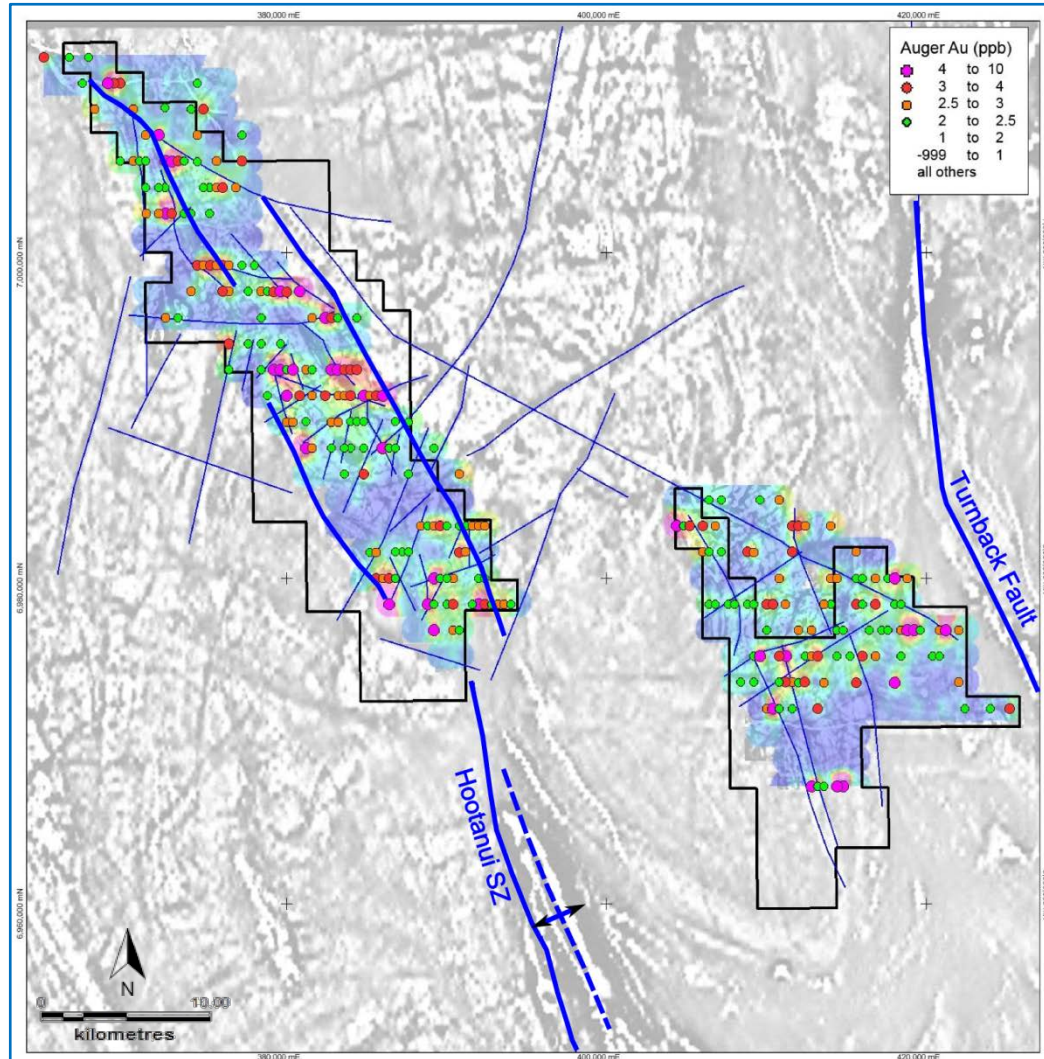
- ✦ Large area along strike from 10Moz Regis gold camp (43km strike)
- ✦ Known greenstone; no previous geochemistry

De La Poer Project

- ✦ New greenstone belt and regional shear identified in 1999
- ✦ Essentially unexplored

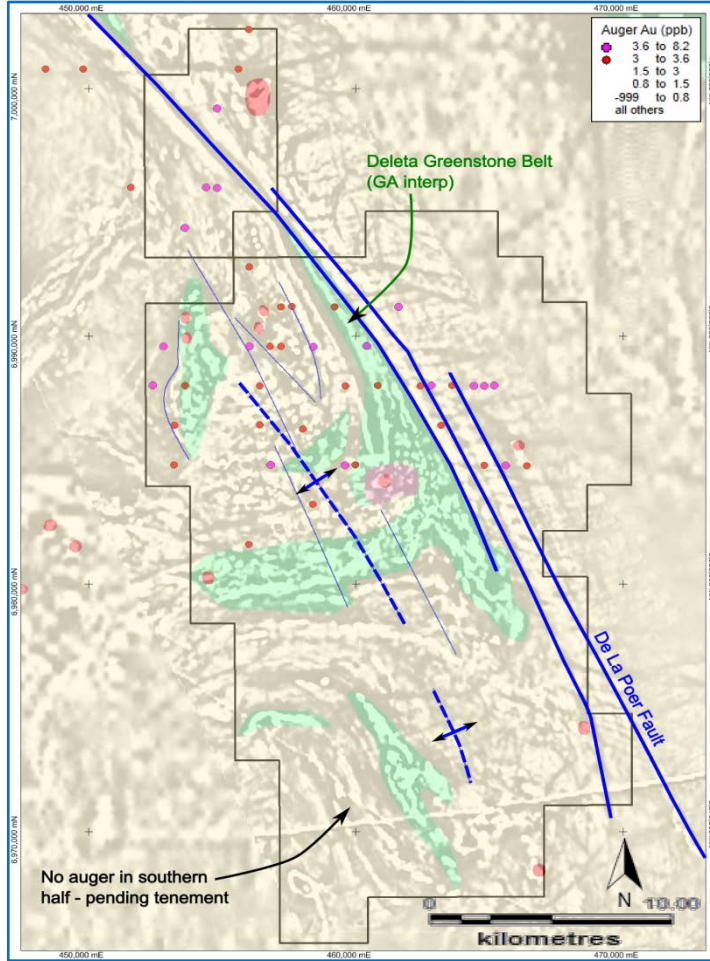
Duketon North Project

Imaged auger gold over aeromagnetics

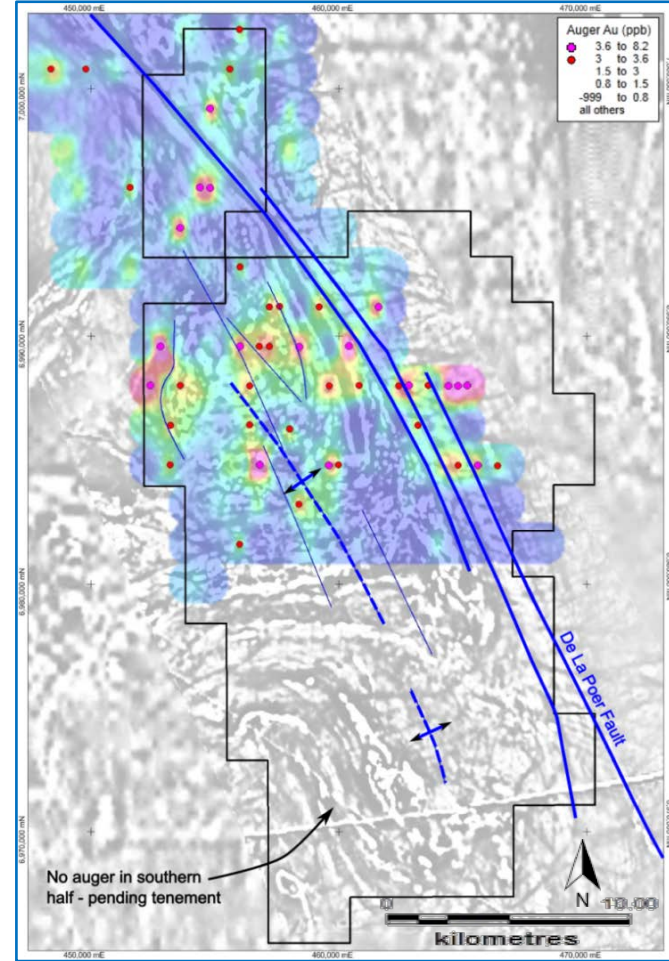


- ✦ Anomalism around segments of the Hootanui Shear Zone along strike from Duketon gold camp
- ✦ Granite-dominated with greenstone remnants
- ✦ 1,600 x 400m auger identified multiple drill-ready targets on splay faults adjacent to major structures with coincident pathfinders
- ✦ 400 x 200m infill in better areas broadly replicated earlier results
- ✦ No drilling to date – aircore planned

Gold on Interpreted Geology/Aeromagnetics



Gold on Imaged Gold-in-soil/Aeromagnetics



- Multiple gold-pathfinder targets in greenstone areas, coincident with structure (aircore drilling planned)

Why Invest in Breaker?

- ✦ **Outstanding discovery potential with large new, drill-ready gold-in-soil anomalies identified on all projects in a tight capital structure dominated by funds**
- ✦ Results to date validate the targeting strategy and confirm the ability to see through sand and significant thicknesses of Permian cover
- ✦ **Tier 1 discovery opportunities in an unexplored part of a world class gold province in Australia are uncommon**
- ✦ The market is tough but using our people and specialist skills we plan to take advantage of this
- ✦ **Ongoing news flow from multiple drill targets by targeted discovery-style programs or joint venture**

Disclaimer

- ✦ This presentation has been prepared by Breaker Resources NL ("Company") in connection with providing general and background information on the Company.
- ✦ This presentation should not be relied upon as a representation of any matter that an advisor or potential investor should consider in evaluating the Company. The Company and its related bodies corporate or any of its directors, agents, officers or employees do not make any representation or warranty, express or implied, as to or endorsement of the Company the accuracy or completeness of any information, statements or representations contained in this presentation, and they do not accept any liability whatsoever (including in negligence) for any information, representation or statement made in or omitted from this presentation.
- ✦ This document may contain certain forward looking statements which involve known and unknown risks, delays and uncertainties not under the Company's control which may cause actual results, performance or achievements of the Company to be materially different from the results, performance or expectations implied by these forward looking statements. The Company makes no representation or warranty, express or implied, as to or endorsement of the accuracy or completeness of any information, statements or representations contained in this presentation with respect to the Company. Any discussion in relation to Exploration Targets is only conceptual in nature.
- ✦ Investors are advised that by their nature as visual aids, presentations provide information in a summary form. Investors are urged to read supporting information in full in ASX releases.
- ✦ This presentation does not constitute an offer of securities in the Company; nor should this presentation be relied upon by any advisor or potential investor in making an investment decision in the Company.

Competent Persons Statement

The information in this report that relates to Exploration Targets and Exploration Results is based on information compiled by Tom Sanders who is a Member of The Australasian Institute of Mining and Metallurgy. Mr Sanders is an officer of Breaker Resources NL and his services have been engaged by Breaker on an 80% of full time basis; he is also a shareholder in the Company. Mr Sanders has sufficient experience that is relevant to the style of mineralisation and type of deposit under consideration and to the activity being undertaken to qualify as a Competent Person as defined in the 2012 Edition of the 'Australasian Code for Reporting of Exploration Results, Mineral Resources and Ore Reserves'. Mr Sanders consents to the inclusion in the report of the matters based on his information in the form and context in which it appears.

The geotechnical information communicated in the slides in this presentation relating to Breaker Resources' exploration results prior to 1 December 2013, and its assessment of exploration completed by past explorers, was first prepared and disclosed under the JORC Code 2004. It has not been updated since to comply with the JORC Code 2012 on the basis that the information has not materially changed since it was reported.



THANK YOU