

---

## **SIGNIFICANT GOLD-IN-SOIL ANOMALY IDENTIFIED AT KURRAJONG SOUTH PROJECT**

- ✦ **A coherent 12km gold-in-soil anomaly has been identified in sand dune country at the previously undrilled Kurrajong South Project.**
- ✦ **The soil anomaly is associated with elevated mercury, silver, molybdenum and copper (peak value of 24ppb gold, 1,574 ppb silver) and is coincident with the apex of a domal granite intrusion situated adjacent to a major fault.**
- ✦ **Aircore or RC drilling is planned in the September 2013 Quarter following infill soil sampling.**
- ✦ **Trend of positive results on all projects sampled since listing continues.**

Breaker Resources NL (ASX: BRB, "Breaker") is pleased to advise that a 12km-long gold-in-soil anomaly has been identified at the 570km<sup>2</sup> Kurrajong South Project, located 170km east of Laverton in the Eastern Goldfields Superterrane ("EGST"), Western Australia (Figure 1).

Breaker's soil program identified a cohesive gold anomaly that extends over a 12km distance, and is up to 2km in width with peak values of 24ppb gold and 1,574ppb silver in the north-western part of the Kurrajong South Project (Figure 2). Anomalous gold-in-soil values are associated with several common gold pathfinder elements including mercury, silver, molybdenum and copper (aqua regia digest, ICP MS finish).

The gold-in-soil anomaly was identified following an 85km<sup>2</sup> reconnaissance auger soil sampling program that targeted the intersection of a domal granite intrusion and a major fault in the southern part of the Dorothy Hills greenstone belt (1,600m x 400m sample spacing). Recent research has shown that many large gold deposits in the well-explored western half of the EGST have a similar structural setting.

The Kurrajong South Project area is dominated by wind-blown sand dunes in an area of Permian cover. There is no historical drilling in the area.

Aircore or RC drilling will follow a selective infill auger soil sampling program on a 400m x 100m pattern to facilitate drill targeting. Drilling is planned to start during the September 2013 quarter.

Executive Chairman, Tom Sanders said: "The Kurrajong soil anomaly is particularly interesting as it is large and cohesive despite the sand dune country and the Permian cover. It is also coincident with a large structural set-up that is common to many large gold deposits. We have been looking for large gold deposit signatures in new areas and these results add to the exciting results we have been getting from our Dexter, Mt Gill and Duketon North Projects."

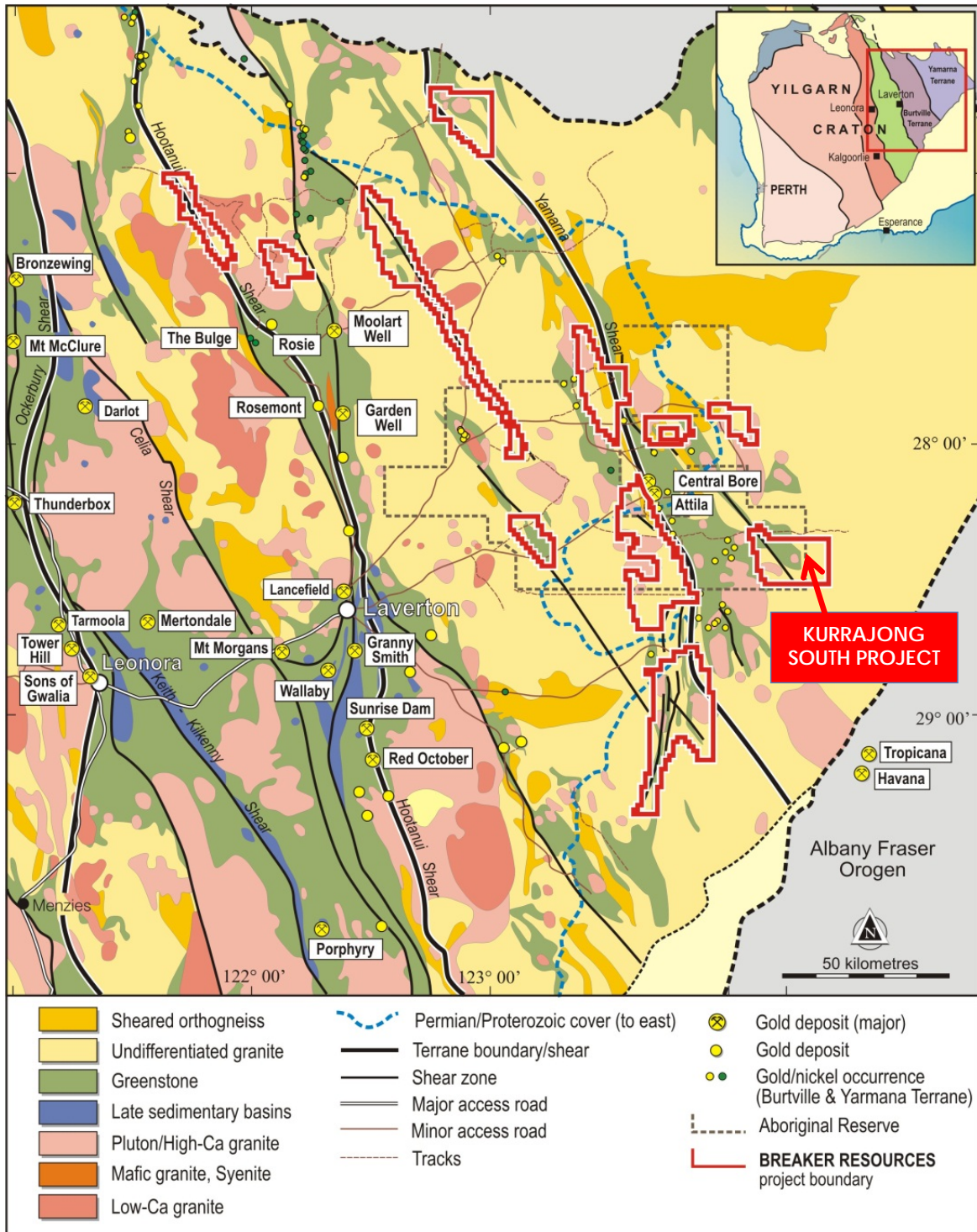


Figure 1: Project Location Plan, Breaker Resources NL

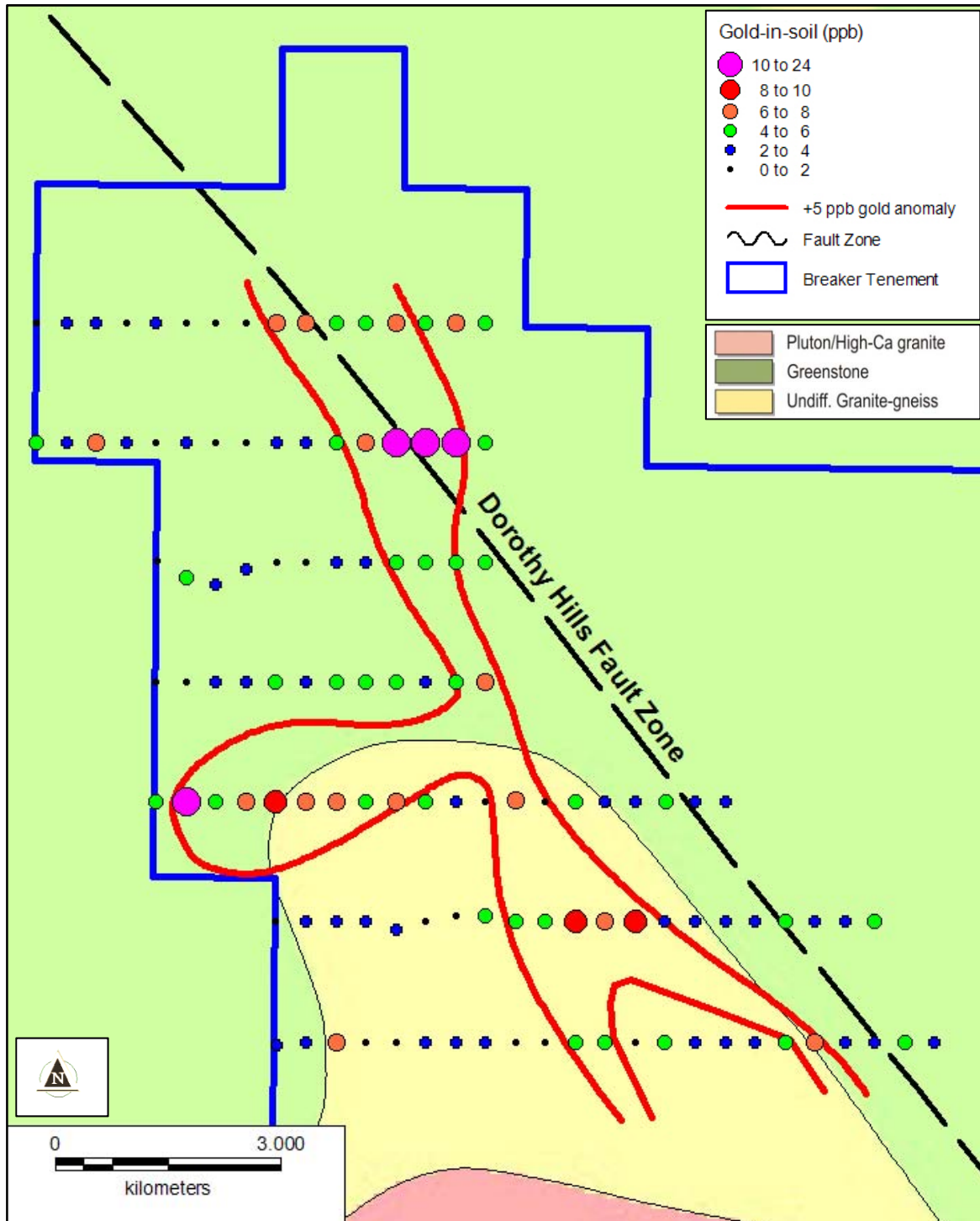


Figure 2: Kurrajong South Project - Gold-in-Soil Values over Interpreted Geology  
(aeromagnetic interpretation by Geoscience Australia, 2001)

*Tom Sanders*

Tom Sanders  
Executive Chairman  
Breaker Resources NL

**About Breaker**

Breaker Resources NL ("Breaker") is an Australian exploration company pursuing new opportunities for gold discovery in the largely unexplored Yamarna and Burtville Terranes, located in the eastern part of the Eastern Goldfields Superterrane ("EGST"), Western Australia. Breaker Resources NL listed on the ASX in April 2012.

Breaker's projects target structural settings where gold deposits are known to be most common based on quantitative spatial analysis studies in the well-explored western part of the EGST. These structural settings are dominated by major faults situated adjacent to regional anticlines, domal granite intrusions, greenstone belts and fault bends.

Breaker is the largest tenement holder in the EGST with a 100% interest in eight exploration projects with an overall area of ~5,500km<sup>2</sup>. The Company's projects include 190km of the Yamarna Shear Zone, four previously undrilled greenstone belts and several other large crustal faults. Significant gold discoveries made in the Yamarna and Burtville Terranes in the last ten years include Moolart Well (2002), Garden Well (2009) and Central Bore (2009). The Tropicana gold deposit to the immediate south of the Yilgarn Craton, was discovered in 2005.

The Company's main exploration tools are modern geochemical techniques that provide a valuable and direct tool for discovery by enabling cost-effective assessment of large parts of one of most gold-endowed provinces in the world.

**Competent Person Statement**

The information contained in this report that relates to exploration results and geological information is based on information compiled by Mr Tom Sanders and Mr Alastair Barker, officers of Breaker Resources NL and whose services have been engaged by Breaker on an 80% of full time basis. Mr Sanders and Mr Barker are Members of the Australasian Institute of Mining and Metallurgy and have sufficient experience which is relevant to the style of mineralisation and type of deposit under consideration and to the activities which they are undertaking to qualify as Competent Persons as defined in the December 2004 Edition of the 'Australasian Code for Reporting of Exploration Results, Mineral Resources and Ore Reserves' (JORC Code). Mr Sanders and Mr Barker consent to the inclusion in this report of the information based on their work in the form and context in which it appears.

For further information please contact:

**Investors**

Tom Sanders,  
Executive Chairman, Breaker Resources NL  
Ph: (08) 9226 3666

**Media**

Rachel Cooper  
FTI Consulting  
Ph: 0402 132 685